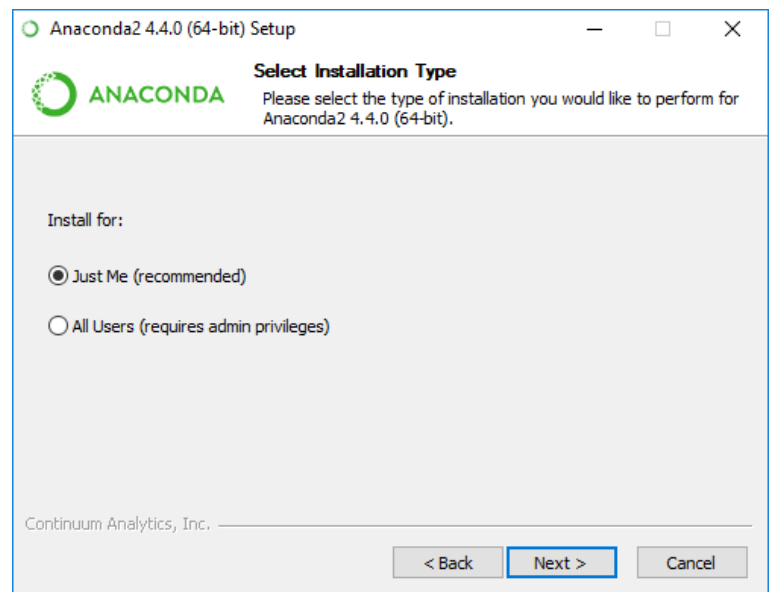
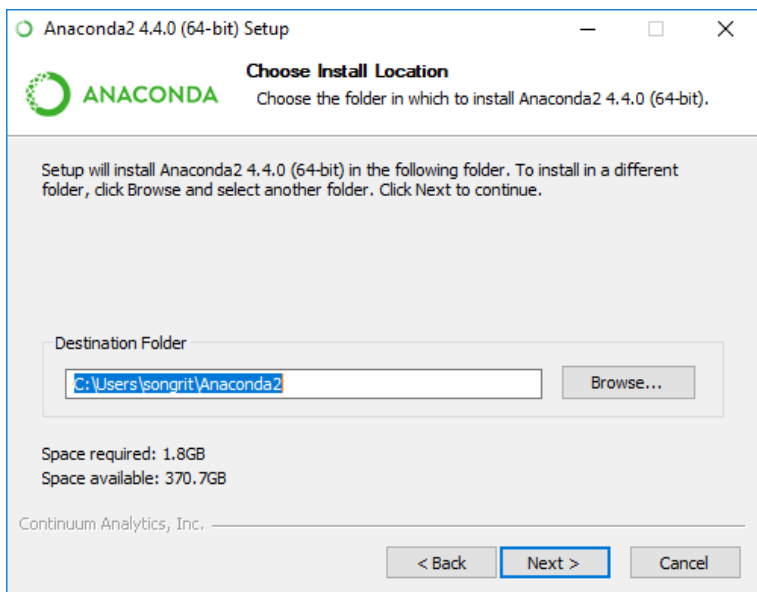
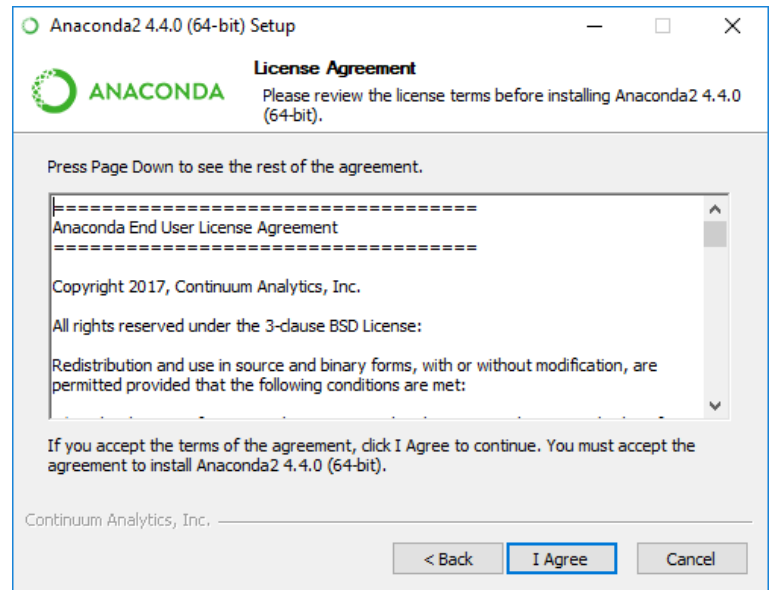
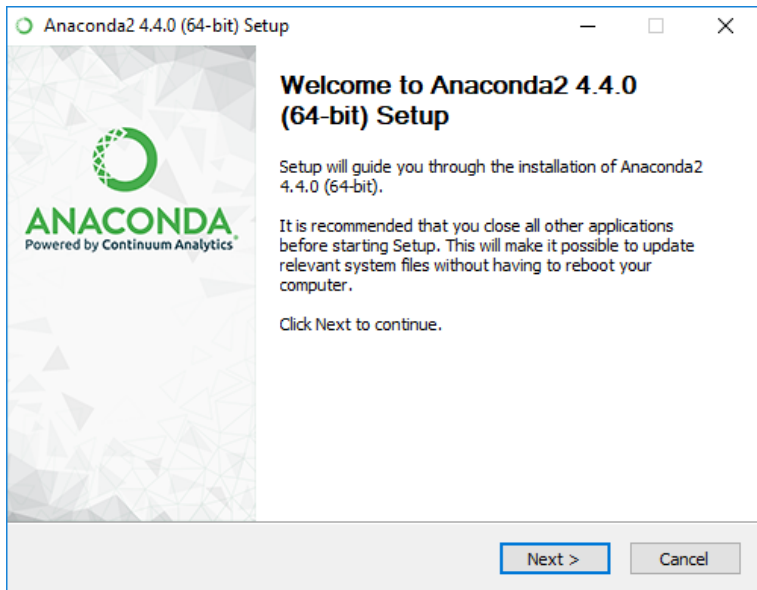


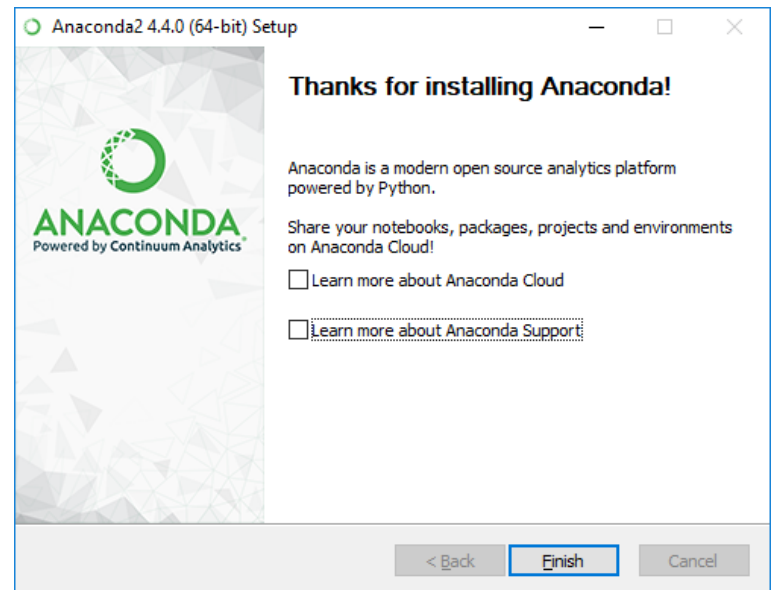
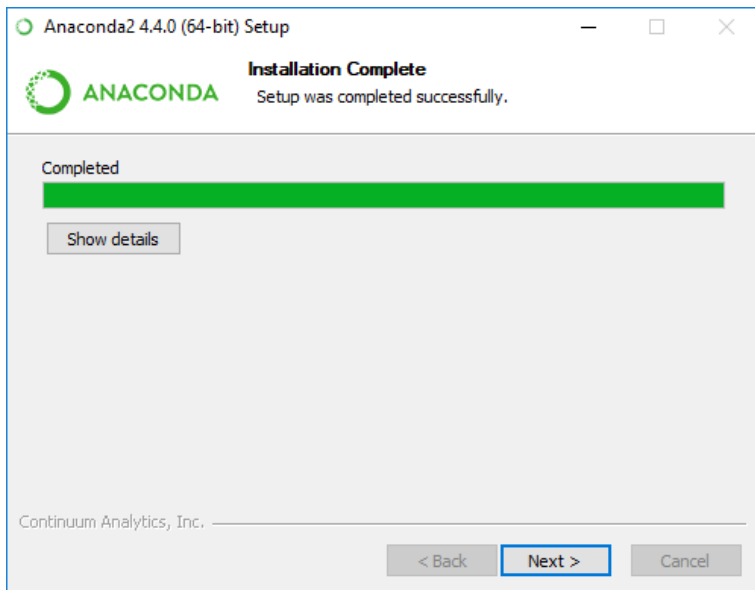
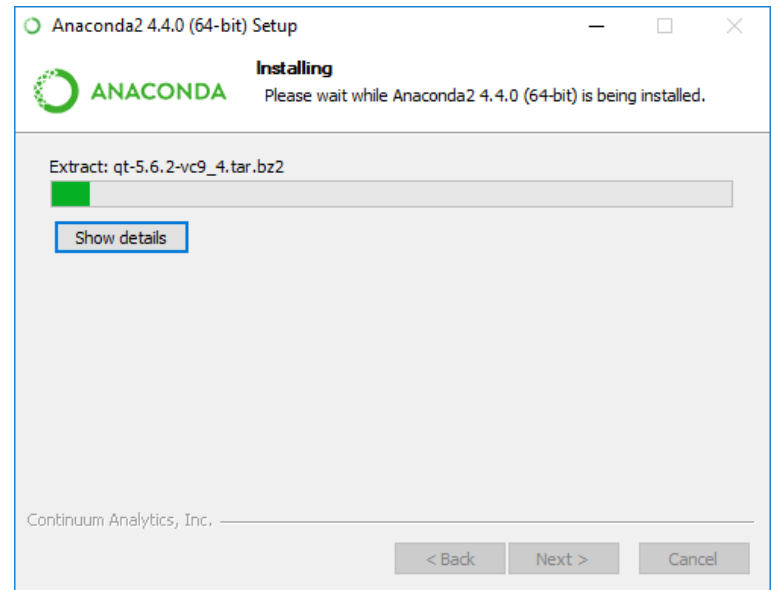
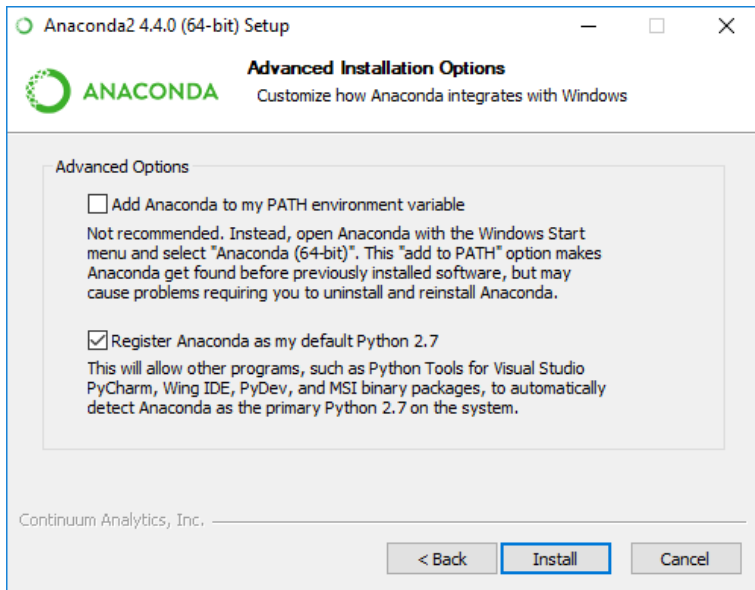
Install Anaconda

Windows

Download

- <https://www.anaconda.com/download/>
 - **Python 2.7 version**
 - https://repo.continuum.io/archive/Anaconda2-4.4.0-Windows-x86_64.exe
 - SHA256 :
7a8ec1a36f385ebf28a1a8cf63b8b03ac0f7744e1531f5d3
59ce6a6d903913e0





Home

Environments

Projects (beta)

Learning

Community

Documentation

Developer Blog

Feedback



Applications on

root

Channels

Refresh



jupyter

notebook

5.0.0

Web-based, interactive computing notebook environment. Edit and run human-readable docs while describing the data analysis.

Launch



qtconsole

4.3.0

PyQt GUI that supports inline figures, proper multiline editing with syntax highlighting, graphical calltips, and more.

Launch

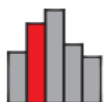


spyder

3.1.4

Scientific PYTHON Development Environment. Powerful Python IDE with advanced editing, interactive testing, debugging and introspection features

Launch



glueviz

0.9.1

Multidimensional data visualization across files. Explore relationships within and among related datasets.



orange3

3.4.1

Component based data mining framework. Data visualization and data analysis for novice and expert. Interactive workflows with a large toolbox.



rstudio

1.0.136

A set of integrated tools designed to help you be more productive with R. Includes R essentials and notebooks.

Install python package : pyserial

- Open Anaconda
- Clicks
 - Environments -> root
 - Open Terminal
- Install pyserial
 - On terminal console
 - **pip install** pyserial
- Test
 - echo "import serial" | python