



# Kasetsart IPv6

---

รศ.ดร. อนันต์ พลเพิ่ม

Asso. Prof. Anan Phonphoem, Ph.D.

[anan.p@ku.ac.th](mailto:anan.p@ku.ac.th)

<http://www.cpe.ku.ac.th/~anan>

Computer Engineering Department

Kasetsart University, Bangkok, Thailand

# No IPv6 service available

```
anan@APMoose: ~  
anan@APMoose:~$ ifconfig  
eth0      Link encap:Ethernet  HWaddr 00:1b:24:40:b9:e2  
          UP BROADCAST MULTICAST  MTU:1500  Metric:1  
          RX packets:0 errors:0 dropped:0 overruns:0 frame:0  
          TX packets:0 errors:0 dropped:0 overruns:0 carrier:0  
          collisions:0 txqueuelen:1000  
          RX bytes:0 (0.0 B)  TX bytes:0 (0.0 B)  
          Interrupt:18  
  
lo        Link encap:Local Loopback  
          inet addr:127.0.0.1  Mask:255.0.0.0  
          inet6 addr: ::1/128 Scope:Host  
          UP LOOPBACK RUNNING  MTU:16436  Metric:1  
          RX packets:4 errors:0 dropped:0 overruns:0 frame:0  
          TX packets:4 errors:0 dropped:0 overruns:0 carrier:0  
          collisions:0 txqueuelen:0  
          RX bytes:240 (240.0 B)  TX bytes:240 (240.0 B)  
  
wlan0     Link encap:Ethernet  HWaddr 00:19:d2:82:2a:4b  
          inet addr:192.168.1.4  Bcast:192.168.1.255  Mask:255.255.255.0  
          inet6 addr: fe80::219:d2ff:fe82:2a4b/64 Scope:Link  
          UP BROADCAST RUNNING MULTICAST  MTU:1500  Metric:1  
          RX packets:23 errors:0 dropped:0 overruns:0 frame:0  
          TX packets:54 errors:0 dropped:0 overruns:0 carrier:0  
          collisions:0 txqueuelen:1000  
          RX bytes:3001 (3.0 KB)  TX bytes:10386 (10.3 KB)  
  
anan@APMoose:~$
```



# Received IPv6 prefix

```
anan@APMoose: ~/openvpn
RX bytes:0 (0.0 B) TX bytes:0 (0.0 B)
Interrupt:18

lo
Link encap:Local Loopback
inet addr:127.0.0.1 Mask:255.0.0.0
inet6 addr: ::1/128 Scope:Host
UP LOOPBACK RUNNING MTU:16436 Metric:1
RX packets:4 errors:0 dropped:0 overruns:0 frame:0
TX packets:4 errors:0 dropped:0 overruns:0 carrier:0
collisions:0 txqueuelen:0
RX bytes:240 (240.0 B) TX bytes:240 (240.0 B)

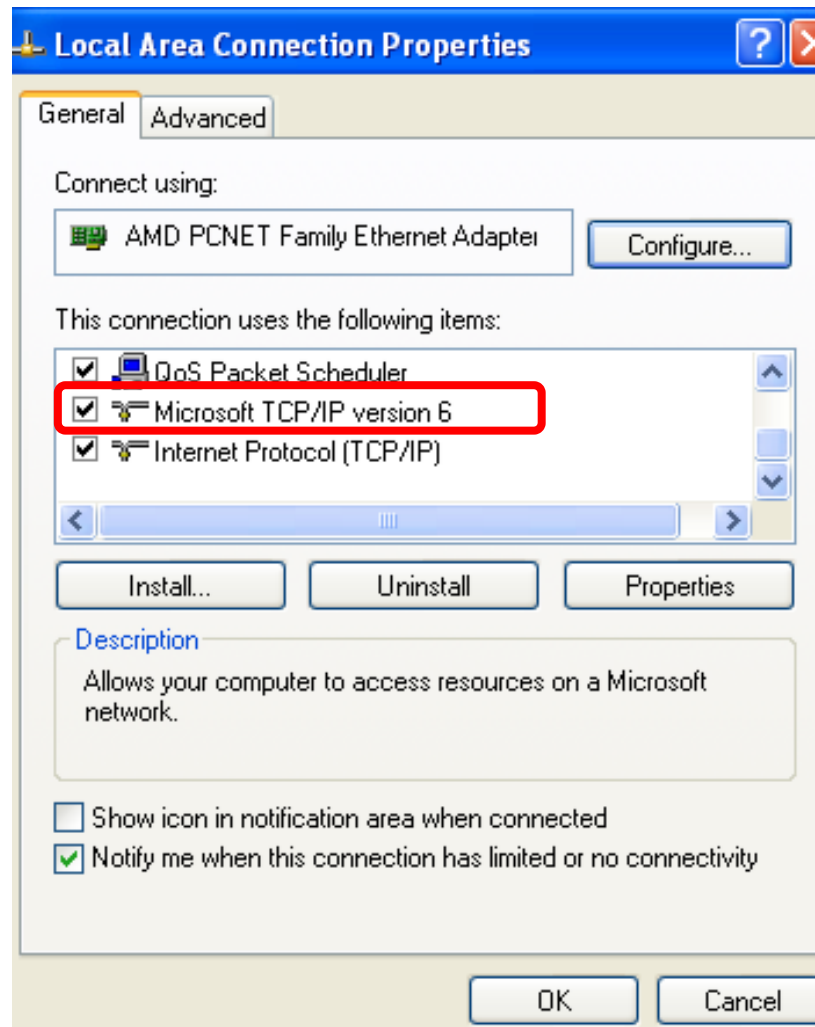
tap0
Link encap:Ethernet HWaddr a6:96:89:99:68:61
inet addr:158.108.240.12 Bcast:158.108.241.255 Mask:255.255.254.0
inet6 addr: 2001:f00:2003:1178:a496:89ff:fe99:6861/64 Scope:Global
inet6 addr: 2001:3c8:1303:1178:a496:89ff:fe99:6861/64 Scope:Global
inet6 addr: fe80::a496:89ff:fe99:6861/64 Scope:Link
UP BROADCAST RUNNING MULTICAST MTU:1500 Metric:1
RX packets:40 errors:0 dropped:0 overruns:0 frame:0
TX packets:6 errors:0 dropped:0 overruns:0 carrier:0
collisions:0 txqueuelen:100
RX bytes:3248 (3.2 KB) TX bytes:484 (484.0 B)

wlan0
Link encap:Ethernet HWaddr 00:19:d2:82:2a:4b
inet addr:192.168.1.4 Bcast:192.168.1.255 Mask:255.255.255.0
inet6 addr: fe80::219:d2ff:fe82:2a4b/64 Scope:Link
UP BROADCAST RUNNING MULTICAST MTU:1500 Metric:1
RX packets:338 errors:0 dropped:0 overruns:0 frame:0
TX packets:430 errors:0 dropped:0 overruns:0 carrier:0
collisions:0 txqueuelen:1000
RX bytes:44580 (44.5 KB) TX bytes:62473 (62.4 KB)

anan@APMoose:~/openvpn$
```



# IPv6 installed (in WinXP)





# Kasetsart IPv6 Address

---

```
C:\Documents and Settings\Moose> ipconfig /all
```

## Windows IP Configuration

```
Host Name . . . . . : moose-a083b5288  
Primary Dns Suffix . . . . . :  
Node Type . . . . . : Unknown  
IP Routing Enabled. . . . . : No  
WINS Proxy Enabled. . . . . : No  
DNS Suffix Search List. . . . . : ku.ac.th
```

## Ethernet adapter Wireless Network Connection:

```
Connection-specific DNS Suffix . : ku.ac.th  
Description . . . . . : ORiNOCO PC Card (5 volt)  
Physical Address. . . . . : 00-02-2D-B6-40-A3  
Dhcp Enabled. . . . . : Yes  
Autoconfiguration Enabled . . . . : Yes
```

# Kasetsart IPv6 Address

IP Address. . . . . : 158.108.133.73

Subnet Mask . . . . . : 255.255.248.0

Nectec : local only

IP Address. . . . . : 2001:f00:2003:1164:b8e0:fc4f:9259:58a1

IP Address. . . . . : 2001:f00:2003:1164:**202:2dff:feb6:40a3**

IP Address. . . . . : 2001:3c8:1303:1164:b8e0:fc4f:9259:58a1

IP Address. . . . . : 2001:3c8:1303:1164:**202:2dff:feb6:40a3**

IP Address. . . . . : fe80::202:2dff:feb6:40a3%4

Default Gateway . . . . . : 158.108.128.1

Uninet : Route

fe80::215:c7ff:fee3:e000%4

DHCP Server . . . . . : 158.108.2.70

DNS Servers . . . . . : 158.108.2.67

Zone\_ID  
Address%Zone\_ID

Link Local Address

158.108.2.70

158.108.4.249

fec0:0:0:ffff::1%2

fec0:0:0:ffff::2%2

fec0:0:0:ffff::3%2

Lease Obtained. . . . . : Thursday, December 21, 2006 8:28:11AM

Lease Expires . . . . . : Thursday, December 21, 2006 10:28:11AM

# Kasetsart IPv6 Address

**202:2dff:feb6:40a3**

Physical Address. . . . .

**00-02-2d-b6-40-a3**





# Kasetart IPv6 Address

---

Ethernet adapter MyTap:

Media State . . . . . : Media disconnected  
Description . . . . . : TAP-Win32 Adapter V8  
Physical Address. . . . . : 00-FF-21-8D-4A-E5

Ethernet adapter Local Area Connection:

Media State . . . . . : Media disconnected  
Description . . . . . : VIA Rhine II Fast Ethernet  
Adapter  
Physical Address. . . . . : 00-40-45-1C-1E-EC





# Kasetsart IPv6 Address

---

Tunnel adapter Teredo Tunneling Pseudo-Interface:

Connection-specific DNS Suffix . :  
Description . . . . . : Teredo Tunneling Pseudo-Interface  
Physical Address. . . . . : FF-FF-FF-FF-FF-FF-FF-FF  
Dhcp Enabled. . . . . : No  
IP Address. . . . . : fe80::5445:5245:444f%7  
Default Gateway . . . . . :  
NetBIOS over Tcpi. . . . . : Disabled



# Kasetsart IPv6 Address

---

Tunnel adapter Automatic Tunneling Pseudo-Interface:

Connection-specific DNS Suffix . : ku.ac.th

Description . . . . . : Automatic Tunneling Pseudo-Interface

Physical Address. . . . . : 9E-6C-85-49

Dhcp Enabled. . . . . : No

IP Address. . . . . : fe80::5efe:158.108.133.73%2

Default Gateway . . . . . :

DNS Servers . . . . . : fec0:0:0:ffff::1%2  
fec0:0:0:ffff::2%2  
fec0:0:0:ffff::3%2

NetBIOS over Tcip. . . . . : Disabled

# IPv6 Address Allocation

	Organization	APNIC prefixes	Services
1	NECTEC/ThaiSarn	2001:f00::/32	Native, dual stack, 6to4 relay, IPv6 tunnel broker
2	UniNet	2001:3c8::/32	Dual stack
3	CAT Telecom	2001:c38::/32	Native, 6to4 tunnel
4	TOT	2001:ec0::/32	Testing, plan for commercial DSLv6
5	Internet Thailand	2001:c00::/32	Dual stack ready, few customers
6	CS-Loxinfo	2404:b0::/32	Testing
7	True Internet	2001:fb0::/32	Testing, 6to4 relay
8	AIS	2001:44c8::/32	Testing
	<b>Kasetsart Univ.</b>	<b>2406:3100::/32</b>	
...	...many more...	...	...

## Search

kasetsart

Search

### Notes

Maximum of 50 results per item are shown. Not happy with the results try Google Search.

Google™ Custom Search

Search

Found the following items -> domains: **5** - ipv4 routes: **1** - ipv6 routes: **1** - providers: **1**

## Domains

Domain	IPv4 address	Ranking Alexa	Pagerank
<a href="http://kasetsart.com">kasetsart.com</a>	<a href="http://69.172.201.153">69.172.201.153</a>		
<a href="http://kasetsart.net">kasetsart.net</a>	<a href="http://43.241.57.7">43.241.57.7</a>		-1
<a href="http://kasetsart.org">kasetsart.org</a>	<a href="http://158.108.216.5">158.108.216.5</a>	335,093	6
<a href="http://kasetsart.university">kasetsart.university</a>	<a href="http://72.52.4.121">72.52.4.121</a>		-1
<a href="http://kasetsartuniversity.com">kasetsartuniversity.com</a>	<a href="http://173.239.23.228">173.239.23.228</a>		

## IPv4 routes

Startip	Endip	Description	Country	#domains	#spamhosts
<a href="http://158.108.0.0">158.108.0.0</a>	<a href="http://158.108.255.255">158.108.255.255</a>	Kasetsart University, Thailand	TH	8	0

## IPv6 routes

Startip	Endip	Description	Country	#domains	#spamhosts
<a href="http://2406:3100::">2406:3100::</a>	<a href="http://2406:3100:ffff:ffff:ffff:ffff:ffff:ffff">2406:3100:ffff:ffff:ffff:ffff:ffff:ffff</a>	Kasetsart University	TH	3	0



<http://www.tcpiputils.com/browse/as/9411>


---

## Summary for as9411

The Autonomous System (AS) number **9411** is assigned to **Kasetsart University, Thailand**. AS9411 is assigned on **1998-09-24** by the Regional Internet Registry **apnic**. The country of registration is **Thailand**. At least **8 domains** are hosted on AS9411. Examples of domains are **durban-corbieres.top** and **bissbox.com**. At least **2 name servers** are hosted on AS9411. Examples of name servers are **ns.ku.ac.th** and **ns2.ku.ac.th**. There are **2 IPv4 prefixes** announced by AS9411. Examples of prefixes are **158.108.0.0/16** and **192.102.83.0/24**. There is **one IPv6 prefix** announced by AS9411. This prefix is **2406:3100::/32**. AS9411 does not have any bogon prefixes.

<http://www.tcpiputils.com/browse/as/9411>



## General information

AS number	9411
Alias	AS9411, ASN9411
Organization	Kasetsart University, Thailand
Country	Thailand (TH) 
Regional Internet Registry (RIR)	apnic
Allocation or assignment date	1998-09-24
Number of IPs originated (v4)	65,792
ASRank (based on number of IPs)	3,073
Number of IPv4 prefixes	2
Number of IPv6 prefixes	1
AS has bogon prefixes	No
Number of IPv4 peers	1
Number of IPv6 peers	1

## Hosting information

Number of domains hosted	8
Number of adult domains hosted	0
Number of name servers hosted	2
Number of SPAM hosts hosted	0
Number of open proxies hosted	0
Number of mail servers hosted	3

## Prefixes IPv4

Prefix	Country	Description
<a href="#">158.108.0.0/16</a>	TH 	Kasetsart University, Thailand
<a href="#">192.102.83.0/24</a>	TH 	imported inetnum object for KUCE

## Prefixes IPv6

Prefix	Country	Description
<a href="#">2406:3100::/32</a>	TH 	Kasetsart University