



Kasetsart IPv6

รศ.ดร. อนันต์ พลเพิ่ม

Asso. Prof. Anan Phonphoem, Ph.D.

anan.p@ku.ac.th

<http://www.cpe.ku.ac.th/~anan>

Computer Engineering Department

Kasetsart University, Bangkok, Thailand

No IPv6 service available

```
anan@APMoose: ~  
anan@APMoose:~$ ifconfig  
eth0      Link encap:Ethernet  HWaddr 00:1b:24:40:b9:e2  
          UP BROADCAST MULTICAST  MTU:1500  Metric:1  
          RX packets:0 errors:0 dropped:0 overruns:0 frame:0  
          TX packets:0 errors:0 dropped:0 overruns:0 carrier:0  
          collisions:0 txqueuelen:1000  
          RX bytes:0 (0.0 B)  TX bytes:0 (0.0 B)  
          Interrupt:18  
  
lo        Link encap:Local Loopback  
          inet addr:127.0.0.1  Mask:255.0.0.0  
          inet6 addr: ::1/128 Scope:Host  
          UP LOOPBACK RUNNING  MTU:16436  Metric:1  
          RX packets:4 errors:0 dropped:0 overruns:0 frame:0  
          TX packets:4 errors:0 dropped:0 overruns:0 carrier:0  
          collisions:0 txqueuelen:0  
          RX bytes:240 (240.0 B)  TX bytes:240 (240.0 B)  
  
wlan0     Link encap:Ethernet  HWaddr 00:19:d2:82:2a:4b  
          inet addr:192.168.1.4  Bcast:192.168.1.255  Mask:255.255.255.0  
          inet6 addr: fe80::219:d2ff:fe82:2a4b/64 Scope:Link  
          UP BROADCAST RUNNING MULTICAST  MTU:1500  Metric:1  
          RX packets:23 errors:0 dropped:0 overruns:0 frame:0  
          TX packets:54 errors:0 dropped:0 overruns:0 carrier:0  
          collisions:0 txqueuelen:1000  
          RX bytes:3001 (3.0 KB)  TX bytes:10386 (10.3 KB)  
  
anan@APMoose:~$
```

Received IPv6 prefix

```
anan@APMoose: ~/openvpn
RX bytes:0 (0.0 B) TX bytes:0 (0.0 B)
Interrupt:18

lo
Link encap:Local Loopback
inet addr:127.0.0.1 Mask:255.0.0.0
inet6 addr: ::1/128 Scope:Host
UP LOOPBACK RUNNING MTU:16436 Metric:1
RX packets:4 errors:0 dropped:0 overruns:0 frame:0
TX packets:4 errors:0 dropped:0 overruns:0 carrier:0
collisions:0 txqueuelen:0
RX bytes:240 (240.0 B) TX bytes:240 (240.0 B)

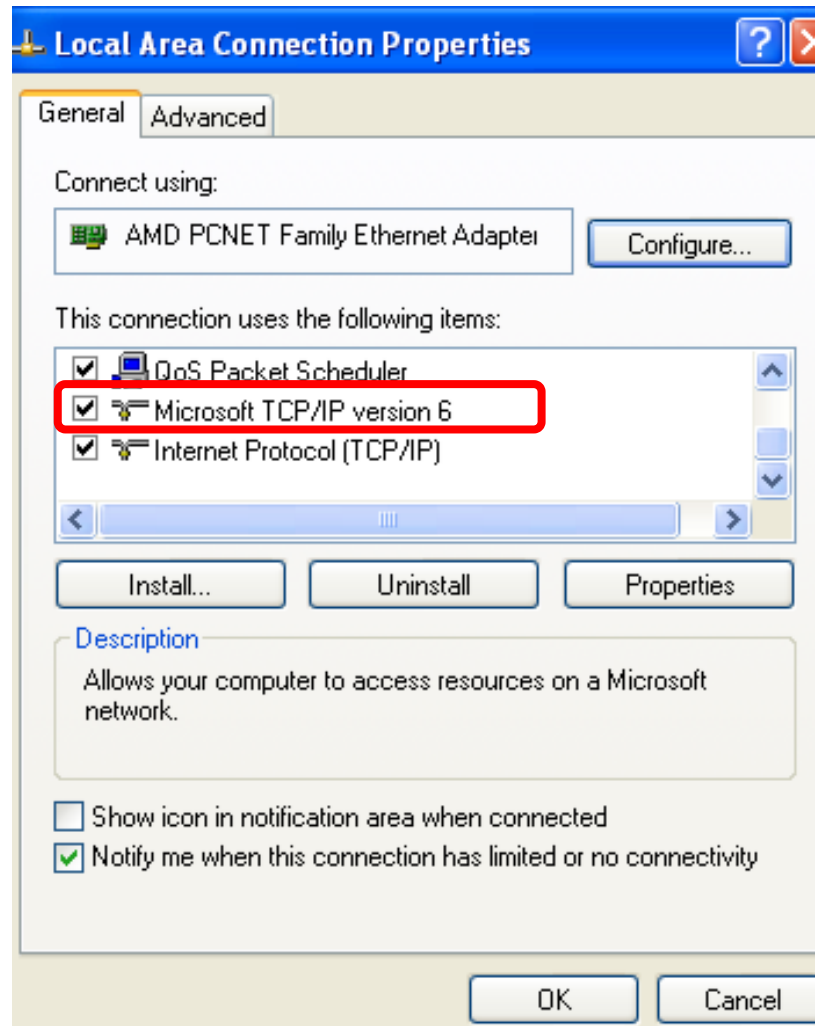
tap0
Link encap:Ethernet HWaddr a6:96:89:99:68:61
inet addr:158.108.240.12 Bcast:158.108.241.255 Mask:255.255.254.0
inet6 addr: 2001:f00:2003:1178:a496:89ff:fe99:6861/64 Scope:Global
inet6 addr: 2001:3c8:1303:1178:a496:89ff:fe99:6861/64 Scope:Global
inet6 addr: fe80::a496:89ff:fe99:6861/64 Scope:Link
UP BROADCAST RUNNING MULTICAST MTU:1500 Metric:1
RX packets:40 errors:0 dropped:0 overruns:0 frame:0
TX packets:6 errors:0 dropped:0 overruns:0 carrier:0
collisions:0 txqueuelen:100
RX bytes:3248 (3.2 KB) TX bytes:484 (484.0 B)

wlan0
Link encap:Ethernet HWaddr 00:19:d2:82:2a:4b
inet addr:192.168.1.4 Bcast:192.168.1.255 Mask:255.255.255.0
inet6 addr: fe80::219:d2ff:fe82:2a4b/64 Scope:Link
UP BROADCAST RUNNING MULTICAST MTU:1500 Metric:1
RX packets:338 errors:0 dropped:0 overruns:0 frame:0
TX packets:430 errors:0 dropped:0 overruns:0 carrier:0
collisions:0 txqueuelen:1000
RX bytes:44580 (44.5 KB) TX bytes:62473 (62.4 KB)

anan@APMoose:~/openvpn$
```



IPv6 installed (in WinXP)





Kasetsart IPv6 Address

```
C:\Documents and Settings\Moose> ipconfig /all
```

Windows IP Configuration

```
Host Name . . . . . : moose-a083b5288
Primary Dns Suffix . . . . . :
Node Type . . . . . : Unknown
IP Routing Enabled. . . . . : No
WINS Proxy Enabled. . . . . : No
DNS Suffix Search List. . . . . : ku.ac.th
```

Ethernet adapter Wireless Network Connection:

```
Connection-specific DNS Suffix . : ku.ac.th
Description . . . . . : ORiNOCO PC Card (5 volt)
Physical Address. . . . . : 00-02-2D-B6-40-A3
Dhcp Enabled. . . . . : Yes
Autoconfiguration Enabled . . . . : Yes
```

Kasetsart IPv6 Address

```

IP Address. . . . . : 158.108.133.73
Subnet Mask . . . . . : 255.255.248.0
IP Address. . . . . : 2001:f00:2003:1164:b8e0:fc4f:9259:58a1
IP Address. . . . . : 2001:f00:2003:1164:202:2dff:feb6:40a3
IP Address. . . . . : 2001:3c8:1303:1164:b8e0:fc4f:9259:58a1
IP Address. . . . . : 2001:3c8:1303:1164:202:2dff:feb6:40a3
IP Address. . . . . : fe80::202:2dff:feb6:40a3%4
Default Gateway . . . . . : 158.108.128.1
                        fe80::215:c7ff:fee3:e000%4
DHCP Server . . . . . : 158.108.2.70
DNS Servers . . . . . : 158.108.2.67
                        158.108.2.70
                        158.108.4.249
                        fec0:0:0:ffff::1%2
                        fec0:0:0:ffff::2%2
                        fec0:0:0:ffff::3%2
Lease Obtained. . . . . : Thursday, December 21, 2006 8:28:11AM
Lease Expires . . . . . : Thursday, December 21, 2006 10:28:11AM
  
```

Nectec : local only

IP Address. : 2001:f00:2003:1164:b8e0:fc4f:9259:58a1
 IP Address. : 2001:f00:2003:1164:**202:2dff:feb6:40a3**

IP Address. : 2001:3c8:1303:1164:b8e0:fc4f:9259:58a1
 IP Address. : 2001:3c8:1303:1164:**202:2dff:feb6:40a3**

IP Address. : fe80::202:2dff:feb6:40a3%4

Default Gateway : 158.108.128.1

fe80::215:c7ff:fee3:e000%4

DHCP Server : 158.108.2.70

DNS Servers : 158.108.2.67

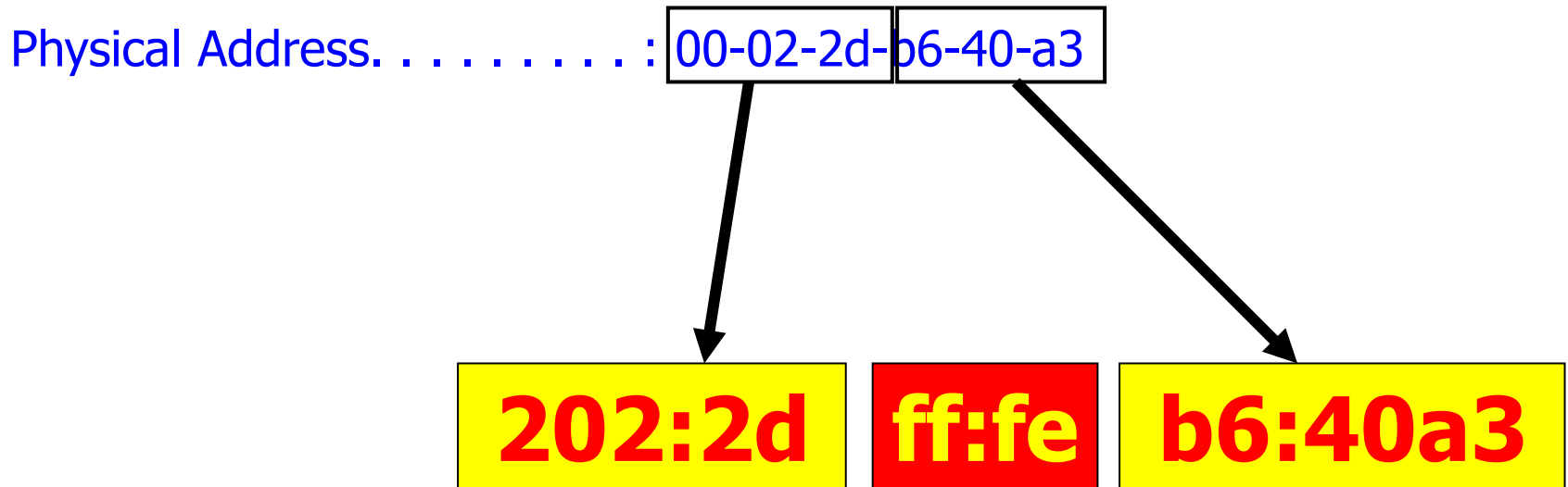
Uninet : Route

Link Local Address

Zone_ID
Address%Zone_ID

Kasetsart IPv6 Address

202:2dff:fe**b6:40a3**





Kasetsart IPv6 Address

Ethernet adapter MyTap:

Media State : Media disconnected
Description : TAP-Win32 Adapter V8
Physical Address. : 00-FF-21-8D-4A-E5

Ethernet adapter Local Area Connection:

Media State : Media disconnected
Description : VIA Rhine II Fast Ethernet
Adapter
Physical Address. : 00-40-45-1C-1E-EC



Kasetsart IPv6 Address

Tunnel adapter Teredo Tunneling Pseudo-Interface:

Connection-specific DNS Suffix . :
Description : Teredo Tunneling Pseudo-Interface
Physical Address. : FF-FF-FF-FF-FF-FF-FF-FF
Dhcp Enabled. : No
IP Address. : fe80::5445:5245:444f%7
Default Gateway :
NetBIOS over Tcpi. : Disabled

IPv6 Address Allocation

	Organization	APNIC prefixes	Services
1	NECTEC/ThaiSarn	2001:f00::/32	Native, dual stack, 6to4 relay, IPv6 tunnel broker
2	UniNet	2001:3c8::/32	Dual stack
3	CAT Telecom	2001:c38::/32	Native, 6to4 tunnel
4	TOT	2001:ec0::/32	Testing, plan for commercial DSLv6
5	Internet Thailand	2001:c00::/32	Dual stack ready, few customers
6	CS-Loxinfo	2404:b0::/32	Testing
7	True Internet	2001:fb0::/32	Testing, 6to4 relay
8	AIS	2001:44c8::/32	Testing
...	...many more...