

Network Interoperability

Asso.Prof. Dr. Anan Phonphoem
Dr. Aphirak Jansang

Department of Computer Engineering,
Faculty of Engineering, Kasetsart University,
Bangkok, Thailand

Various Devices

- Cisco Router
- Huawei Router
- 3Com Router
- ZyXEL switch



Cisco 1841

Processor

Type: 1 x RM5261A-256H
RISC processor 250MHz



Memory

RAM: 256 MB SDRAM
Flash Memory: compact flash 64 MB



Networking

w/2xFE, 2 WAN slots
Extra: EIGRP

Huawei AR 28-09

Processor

Type: 1 x MPC8241 200 MHz

Memory

RAM: 128 MB SDRAM

Flash Memory: 32 MB

Networking

Data Link Protocol: Ethernet, Fast Ethernet, SDLC, **HDLC**, **Frame Relay**, RS-232, X.25, **PPP**, RS-530, X.21, V.35, RS-499, SLIP, V.24

Network / Transport Protocol: TCP/IP, UDP/IP, L2TP, IP/IPX, IPSec, SLIP, PPPoE

Routing Protocol: OSPF, BGP-4, RIP-1, RIP-2, static IP routing

Remote Management Protocol: SNMP, RMON, Telnet

Communication Mode: Half-duplex, full-duplex

Compliant Standards: IEEE 802.2, IEEE 802.3

Features: Modular design, firewall protection, IP-routing, **DHCP** support, VPN support, load balancing, **VLAN** support, manageable, half duplex mode, full duplex mode



Huawei AR 28-09

Huawei AR 18-12

Processor

Type: MPC860T 50 MHz

Memory

RAM: 64 MB SDRAM

Flash Memory: 8 MB

Networking

Data Link Protocol:

Ethernet, PPP, SLIP, FR, LAPB, X.25, ISDN, HDLC, DCC, MODEM, MP

Network / Transport Protocol: IP, ICMP, IP Fast Switch, DHCP Client/Server/Relay, ARP

Routing Protocol: Static, OSPF, RIP v1/v2, Policy Routing, IGMP, PIM-SM, PIM-DM

Application Layer Protocol: Telnet, Rlogin, FTP, TFTP, Callback, Configuration function, SNMP, RMON, Private MIBs



Quidway AR 18-12 Rear View

3COM – 5012

Processor

Type: (unknown → maybe MPC8241 ‘

Memory

RAM: 128 MB SDRAM

Flash Memory: 32 MB

Networking

Data Link Protocol: ISDN, ADSL, E1, T1, high-speed serial, X.25, **PPP**, PPPoE, MP, **Frame Relay**, HDLC/SDLC

Routing Protocol: IP, IPX, OSPF, BGP-4, Integrated IS-IS, RIP V1/V2, Static Routing, MPLS L2 and L3 VPN

Application Layer Protocol: Stateful Firewall, VPN (L2TP, GRE, IPsec), ACLs, NAT, RADIUS, **PAP/CHAP**, TACACS+, X.509 certificates



ZyXEL – 2024ES

Processor

Type: (unknown)

Performance

Switching capacity: 8.8 Gbps

Switching forwarding rate: 6.6 Mbps (@64bytes)

Packet buffer: 256 KByte

MAC address: 8K



Networking

IEEE 802.3 10Base-T Ethernet, IEEE 802.3u 100Base-Tx Ethernet, IEEE 802.ab 1000Base-T Ethernet, IEEE 802.1D STP, IEEE 802.1w **RSTP**, IEEE 802.1p class of service, **IEEE 802.1Q** VLAN tagging, IEEE 802.1x port authentication, Broadcast storm control, IGMP snooping (v1, v2, v3), Multicast VLAN Registration (MVR), MAC filtering per port secures access to each port, 256 static VLAN, up to 4K dynamic VLAN,

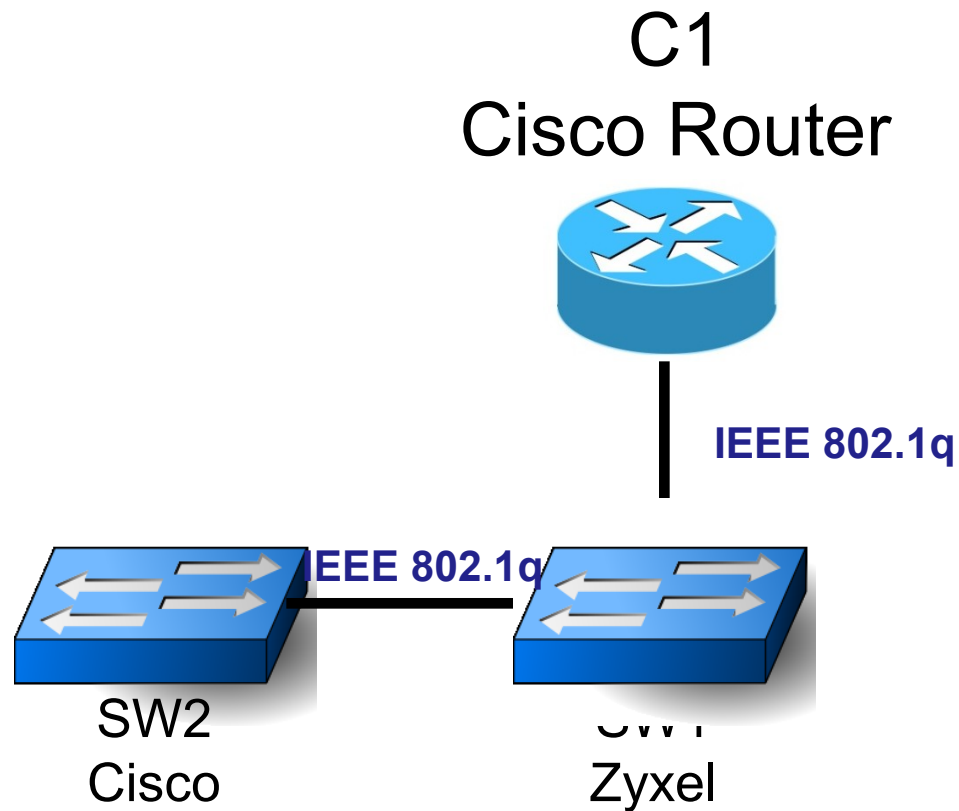
...



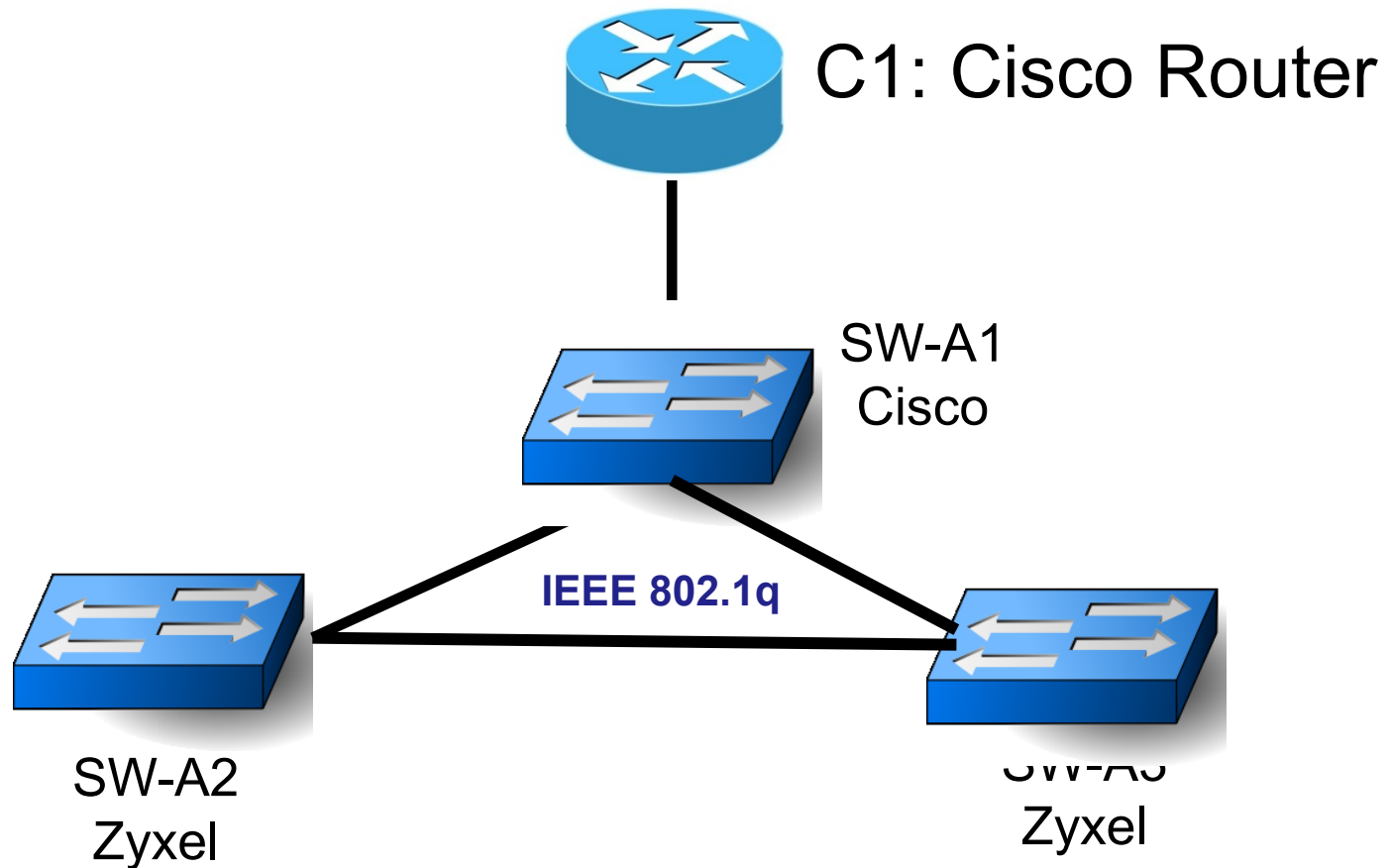
Configuration Scenario

1. Switch Interoperability
2. Router Interoperability

1. Switch Interoperability

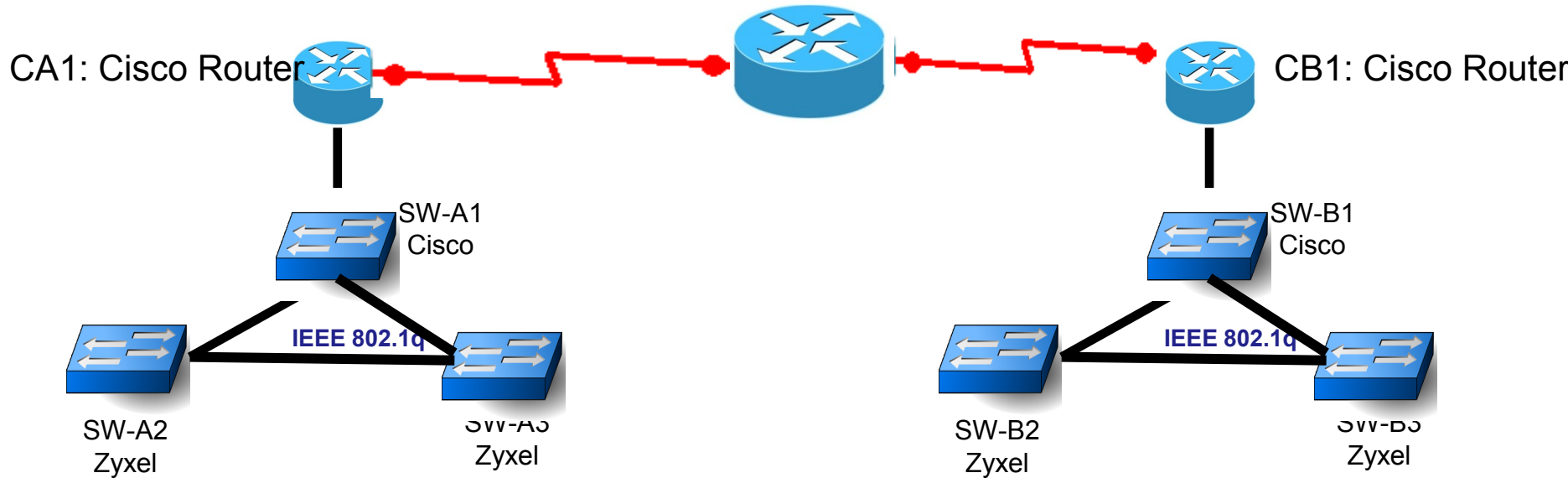


1. Switch Interoperability



2. Router Interoperability

O1 Non-cisco



**Routing Protocol
RIP v2**

Network: 155.123.0.0 / 16

Network Inter-operability

